

DuPage Micro Seal® – Miniature Hose Clamps

300 Series Stainless Steel

ORDER NO.	CLAMP RANGE INCHES	FTS I.D. HOSE 3/16" WALL	PRICE
DUP M4HSP	7/32"-5/8"	3/16" 5/16"	\$1.61
DUP M6HSP	5/16"-7/8"	1/4" 3/8"	\$1.70
DUP M8S	7/16"-1"	5/16" 1/2"	\$1.61
DUP M10S	1/2"-1-1/16"	3/8"-5/8"	\$1.94



Pack 10 per box.



Hose Clamp Tail Tips

Soft red vinyl tail tips dress your job up, while at the same time making those unsightly scars just a bad memory. They will fit on 1/2" band clamps from those other guys as well. Packed 100 per box.

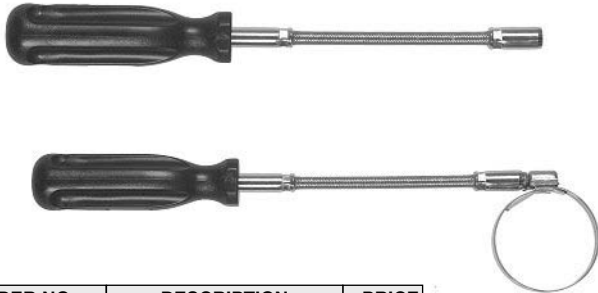


ORDER NO.	PRICE
AWB 125015	\$36.20



Flexible Clamp-Driver

This clamp-driver with hexagon socket and flexible shaft, will facilitate the fitting of our hose clamps in positions as difficult as 90°. 7mm fits Awab clamps.



ORDER NO.	DESCRIPTION	PRICE
AWB 125008	Fits 5/16	\$26.00
AWB 125010	7mm – 9/32	\$26.00

VERNATUBE™ CEN TEK

Fiberglass Marine Wet Exhaust Tubing

Tough and durable VERNATUBE is made by winding resin-impregnated fiberglass rovings onto a rotating mandrel in a pre-determined pattern. The result is near-maximum hoop and longitudinal strengths, provided by the orientation of the glass fibers with respect to the final product's geometry. Through the use of synergistic fillers and the highest rated fire-retardant resins available on the market, VERNATUBE's fire ratings are far better than the values required for self-extinguishing ratings (ASTM-D-365). Standard Length 10'.



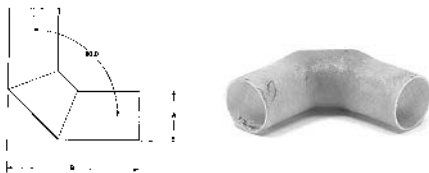
ORDER NO.	NOMINAL O.D.	NOMINAL THICKNESS	PRICE PER LENGTH
VER 1100512	2.00"	.125"	\$133.50
VER 1100501	2.50"	.128"	\$135.75
VER 1100502	3.00"	.130"	\$142.50
VER 1100504	4.00"	.138"	\$168.00
VER 1100506	5.00"	.144"	\$214.00
VER 1100507	6.00"	.148"	\$276.00
VER 1100508	8.00"	.154"	\$476.00

U. L. Rating.
MARINE WET
EXHAUST TUBING
LISTED 699A.



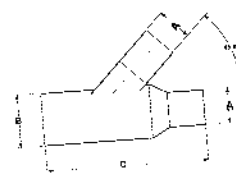
Wet Marine Exhaust Elbows

When used properly in wet marine exhaust environments, these exhaust elbows will not rust or corrode. They are also easy to install and allow change of direction in limited spaces where the exhaust hose might buckle and restrict flow.

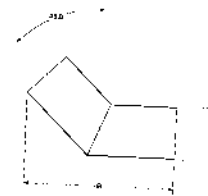


Exhaust "Y"

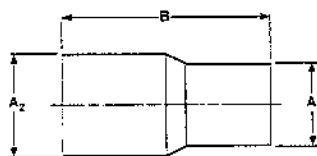
ORDER NO.	A	B	C	PRICE
VER 1200256	3.00"	4.00"	12.00"	\$161.45
VER 1200316	4.00"	4.00"	16.50"	\$177.55



45° Elbows



Couplings



ORDER NO.	A1	A2	B	PRICE
VER 1200270	2.50"	3.00"	8.50"	\$31.05
VER 1200170	3.00"	4.00"	10.00"	\$40.25



ORDER NO.	A	B	PRICE
VER 1200200	2.00"	5.75"	\$42.55
VER 1200195	2.50"	6.38"	\$49.23
VER 1200171	3.00"	7.50"	\$58.43
VER 1200189	3.50"	9.00"	\$69.93
VER 1200157	4.00"	9.38"	\$90.60
VER 1200175	5.00"	12.25"	\$117.53
VER 1200162	6.00"	14.00"	\$151.78

ORDER NO.	NOM. O.D.	B	PRICE
VER 1200192	2.00"	6.75"	\$33.35
VER 1200109	3.00"	8.50"	\$42.55
VER 1200111	3.50"	10.25"	\$48.75
VER 1200112	4.00"	10.25"	\$53.83
VER 1200113	5.00"	13.63"	\$77.28
VER 1200114	6.00"	15.38"	\$109.48