

**Red Devil Replacement Blades**

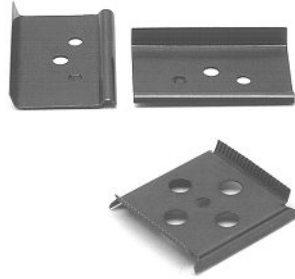


**3061** 1" wide blades fit no. 3010 scraper. 2 blades per card.

**3062** 1-1/2" wide blades fit no. 3040 scraper. One set (2) per card.

**3063** 2-1/2" wide blades fit no. 3050 scraper. One set (2) per card.

ORDER NO.	CTN.	PRICE
RED 3061	6	\$3.16
RED 3062	12	\$3.21
RED 3063	12	\$3.48



**LINZER PRODUCTS**

**Wire Brush**

- **Model # LP304** is a heavy duty wire brush with metal scraper on end, 4 x 11 rows, 11-1/2" x 1-1/2".
- **Model # 305** is a curved hardwood handle brush, 3 x 19 rows, 11-3/4" x 15/16".



LP304



305

ORDER NO.	CTN.	PRICE
LNZ LP304	12	\$4.25
LNZ 305	12	\$2.66

**Red Devil**

**Single-Edge Razor Blades**

Sharp-cutting blades fit all standard scrapers. Longer-wearing blades provide consistent high quality and longer service life.



**3270** 10 blades per card. 12 cards to shelf pack.

ORDER NO.	CTN.	PRICE
RED 3270	12 cards	\$2.51

**3271** 5 blades per pack 10 packs (50 pcs.) in dispenser shelf box.

ORDER NO.	CTN.	PRICE
RED 3271	10 Packs	\$1.61

**3272** bulk, 100 razor blades per box.

ORDER NO.	CTN.	PRICE
RED 3272	1	\$11.24



**Break-Away Retractable Razor Knife**

ORDER NO.	DESCRIPTION	PRICE
SFA KNF10	Break-Away Knife	\$2.00
CTA A907BL	24 Knife Display	\$42.42



**Red Devil**

**All-Purpose Adjustable Utility Knife**

3204 Adjustable-blade of diecast metal.



ORDER NO.	DESCRIPTION	CTN.	PRICE
RED 3204	Utility Knife	6	\$7.65
RED 3251	Replacement Blades (5)	10 Cards	\$2.14

**1" Single-edge Scraper**

This traditional straight-handled scraper has a single-edge 1" wide replaceable steel blade. Length 5-1/2" Uses No. 3061 replacement blade.



ORDER NO.	CTN.	PRICE
RED 3010	12	\$3.55

**1 1/2" Double Edge "Flip-Over" Scraper**

This traditional straight-handled scraper uses a 1-1/2" (3.8cm) wide double-sided, high-carbon steel blade. 3040 7-1/2" (19 cm) long. Carded. Uses No. 3062 replacement blade.



ORDER NO.	CTN.	PRICE
RED 3040	12	\$5.25

**2 1/2" Double Edge**

**"Flip-Over" Scraper** A long-time professional's choice.

This traditional straight handled scraper uses a 2-1/2" (6.4 cm) wide blade. 3050 9-1/2" long. Carded. Uses no. 3063 replacement blade.



ORDER NO.	CTN.	PRICE
RED 3050	6	\$6.16

**Putty Knives**

**4201** 1-1/4" wide – stiff

**4202** 1-1/4" wide – flexible

(Meets Government Specifications GGG-K-481-C, Type IV, Class 1, NSN No. 5110-00-221-1536)



ORDER NO.	CTN.	PRICE
RED 4201	12	\$5.76
RED 4202	12	\$5.76

**Putty Knife**

**4701** 1-1/4" wide – stiff



ORDER NO.	CTN.	PRICE
RED 4701	12	\$1.61

**ZIP-A-WAY® Scraper**

**4509** 3" wide – stiff. Super-flexible

**4510** 3" wide – flexible.



ORDER NO.	DESCRIPTION	CTN.	PRICE
RED 4510	Super Flexible	5	\$7.24
RED 4509	Stiff	5	\$7.24

**WESTERN PACIFIC TRADING, INC.**

**5 in 1 Professional Painter Tool**

3-1/2" Stainless steel 5 in 1 ProPainter tool with cushion handle



ORDER NO.	PRICE
WPT 32075	\$6.19